

Building a New Outdoor Play Area Brick by Brick

Getting outside to play is crucial for the social, emotional, and physical growth of the League School students. Our school playground, which has served our students for 19 years, is approaching the end of its useful life.

Thank you to those who have already answered the call and helped us raise over \$25,000. But with an estimated cost of \$100,000, there is a long way to go to make this project a reality. The support of our entire community is needed to complete the outdoor area our students deserve. While your generosity at any level is greatly appreciated, please consider supporting through our commemorative brick program.

You can still purchase either a 4"x 8" brick for \$100 or an 8"x 8" brick for \$200 to be displayed as part of a walkway in front of the school.

These are a terrific way to celebrate a special person or mark special events, such as graduations, birthdays, anniversaries, weddings, or retirements. All proceeds will go directly to completing the playground and providing our students with a safe and enjoyable area to continue learning and growing.

Thank you in advance for your kind generosity. For additional information, including naming opportunities within the area, don't hesitate to contact Tim McCabe, Head of Development.

Here is what we hope to do with your support:



League School Executive Director, Dr. Frank Gagliardi, Announces His Retirement - *Outlines Goals for Next Year*

League School Executive Director, Frank Gagliardi, EdD, notified the Board of Directors of his plans to retire at the end of the school year. During his almost 11-year tenure, Frank's vision and expertise has led to numerous building and program improvements. He has overseen rapid expansion of the school's facilities including new classroom space, an exercise room, and residential bedrooms.



Under his guidance, the school adopted the renowned Social Communication and Emotional Regulation through Transactional Supports (SCERTS®) program. Unlike most Applied Behavioral Analysis-based methods, this program incorporates social and emotional regulation needs, thereby offering a more holistic educational approach to learning. He has also spearheaded the Train the Trainer model and a preventative and positive Safety Care program.

"Since he started at League School in 2009, Frank has had a positive impact on everything that makes the school one of the premier institutions of its type in the United States," said Roger Lockwood, Board Chair. "The list of accomplishments is endless: an imaginative curriculum, growing enrollment, doubling the physical footprint, improving the facilities, starting and growing a development program, strengthening the faculty and the administration, and more. I doubt there is any person in the field of special education who has had the incredible influence and phenomenal results that Frank has achieved."

"The League School has benefited from Frank's vision, attention-to-detail, and endless energy," said David Foster, Board President. "Under his direction, the school has evolved into one of the top special educational institutions. His understanding and knowledge of the field has allowed the League School to offer relevant curriculum to students at a state-of-the-art campus. His leadership skills are evident as the school has been able to attract and retain top-notch faculty and administration."

We recently sat down with Frank to talk with him about his tenure at the League School and his priorities for the next year. "It's been a rewarding place to be," said Frank. "The enthusiasm and dedication of the staff has translated into very positive changes for the students. I'm particularly proud that 14 staff members have chosen to stay and work for the school for almost 11 years."



Frank Gagliardi with Nancy Hershfield, League School founder Dr. Arnold Vetstein, and Chairman of League School's Board of Director, Roger Lockwood.

Frank is looking forward to continuing the school's growth that is well underway. "We're looking to expand our programs and increase the (cont.)



3rd Annual
"Fore" Autism Golf Classic
 Supporting League School of Greater Boston

"Fore" Autism Golf Classic Set for September 30th

The League School's third annual "Fore" Autism Golf Classic takes place at the end of September. Join us for an enjoyable day on the golf course while giving back to the School:

Mark Your Calendar

Monday, September 30
 8:30 AM – Registration
 9:30 AM – Shotgun Start
 2:30 PM – Awards Luncheon

Sponsorship Opportunities

We have a number of sponsorship opportunities to fit your budget.

Corporate Sponsor Opportunities

(\$3,000-\$10,000): We encourage corporate supporters to consider an Event, Golf Cart, or Luncheon sponsorship opportunity. These include golf for four, and visible company promotion. Learn more about available sponsorship opportunities and register now.

Small Group Sponsor Opportunities

(\$1,500): Our popular small group sponsorship includes golfing for four and a Tee/Green signage promotion of your company.

Register Now

We hope to see you for some golf and giving back at the end of September. The cost for golf only is \$250/individual and \$1,000/foursome. All proceeds from this fun event will go towards improving learning opportunities for students with Autism.

Not a golfer? You can still be part of the day and make your impact. There are volunteers opportunities available throughout the day. You could also join us after golf for the lunch reception. If you have an item or experience you would like to donate for raffle or auction, email Michelle Melanson, Special Events Coordinator, at mmelanson@leagueschool.com for more details.

number of enrolled students," he said. "We've also purchased 4.7 acres next to us and are planning on further expanding our footprint."

Prior to joining the League School, Frank worked for seven years as the Special Education Out-of-District Coordinator for the Westwood Public School system. He was the Special Education Director for 22 years in Stoneham and worked in a similar capacity for Norwood. In Duxbury, he served for seven years as a School Adjustment Counselor. He began his working career in the Boston Public School system as a Business Education teacher. Frank received his bachelor's degree from Suffolk University and Doctorate in Educational Administration from Northeastern University. He has been an adjunct faculty member at Wheelock College and Massasoit Community College.



(Left to Right) CFO, Ismael DaSilva, COO Larry Sauer, and Executive Director Frank Gagliardi



Dr. Frank Gagliardi with wife, Jackie Gagliardi.

Frank is committed to helping the Board with its search process and smooth transition to a new Executive Director (see related article). Upon retirement, Frank is planning to stay active doing some consulting work while also spending more time with family and his granddaughter. He's also looking forward to improving his golf game.

"Serving as Executive Director for the League has been a gratifying experience and the culmination of many years of work in the special education field," said Frank. "Watching the students

advance in their interactions with the staff and their peers is very rewarding. It doesn't get any better than knowing that we've made a difference in the students' lives."

Search Process Underway for a New Executive Director

The League School's Board of Directors has begun a comprehensive search process to identify, recruit, interview, and hire a new Executive Director. The Board has hired Development Guild, a professional search firm that specializes in leadership positions in the non-profit field, to help them with this process. One of the Board's goals is to ensure a smooth leadership transition. To achieve this objective, the Board is targeting April or early May as the start date, which will enable the new director an opportunity to work alongside Frank Gagliardi through the end of June.

Board of Directors Chairman, Roger Lockwood, and President, David Foster, are heading up the search process in collaboration with Development Guild. They have invited five people to join them on the Search Committee, representing a cross-section from the Board, the Friends of the League School, the faculty, and the administration.

(Cont.)



League School Reception to be Held at Cilla's Coffeehouse on September 18th from 6:00-8:00 PM

The transition to adulthood is a challenge for individuals with autism and their families.

Join us in learning how League School of Greater Boston is committed to preparing individuals with Autism to be independent in all aspects of their lives: social, emotional, academic, behavioral, and vocational.

Beer, wine, and light refreshments will be served

This event is generously hosted by: League School Board Member, Tracey Robbins

For More Information or to RSVP:

Michelle Melanson

Special Event Coordinator

E: mmelanson@leagueschool.com

P: (508) 850-3900 ext.312



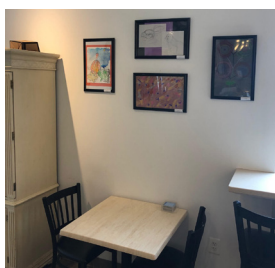
Cilla's Coffeehouse

These members include:

- * Clare O'Callaghan, Ed.D., RN, C.S., Board Member and private practice neuropsychologist and psychiatric nurse
- * Mary Lou McDonough, Ed.D., Board Member and Founder/President of Educational Consultants of Boston
- Ron Katz, Friends of the League School Member and Senior Director of Business Development for Agile Fleet
- Patrick Fuller, School Principal
- Gayle Ferland, School Admissions Coordinator

The tentative timeline calls for goals establishment, outreach, and recruitment throughout the fall. The Search Committee would then interview candidates in January and February. Selection and negotiations would take place in March. If the process goes as planned, the new director would be in place for early May.

Student Art Featured at Cilla's Coffeehouse in Norfolk



Throughout the month of September, League School students' artwork will be featured at Cilla's Coffeehouse, 5A Liberty Lane, in Norfolk. Art from approximately a dozen artists across the Foundations, Content Teaching, Pathfinder, and Transitions programs will be shown. "We will display a variety of mediums including painting, drawing, collage, two-dimensional, and potentially photography," said Danielle Pollard, the school's art teacher.

"Art is an integral part our curriculum," said Danielle. "It allows the students to communicate and express themselves. Each piece of art is as unique as the students are."

On Wednesday, September 18th, there will be a special reception from 6:00-8:00pm hosted by Tracey Robbins, League School Board Member and Senior Vice President of Norwood Bank.

"My husband and I have been captivated by the students' artwork," said Tracey. "Through the artist's work, we discover a different perspective of a particular subject that we may not have appreciated before."

Tracey expressed appreciation to Mary Ellen Blue, Cilla's owner, for her support of the League School and its students. "I look forward to showcasing our students' talent at such a welcoming venue and invite all League School supporters to attend," said Tracey.



If you're not able to attend the special open house event, stop by Cilla's starting on Wednesday, September 4, through the end of the month.

Cilla's is open Monday-Friday from 6AM-3PM; Saturday 7AM-3PM; and Sunday 7AM-2:30PM. Cilla's features specialty coffee, cold brew, tea, and mouth-watering breakfast, pastries, and lunch.



**Follow us on Twitter -
@LeagueforAutism.**



The 2019 League School Falmouth Road Race Team: Why They Ran

It was an overcast and humid day on Sunday August 18, when 17 runners took off from the starting line of this year's Falmouth Road Race to raise money for the League School. Collectively the team raised \$16,250, a record amount and \$1,250 over their goal. The proceeds will go toward the school's enhanced educational needs.

This year's team was comprised of staff, parents, and supporters who all had similar reasons to run – to support the League School of Greater Boston and raising awareness of autism. "Being part of a visible event makes an impact not only to our school, but to all who are involved, including the runners, family, friends, and donors," said Patrick Fuller, the League School's Principal. This was his first year running the race. "I ran to support our remarkable students and to reinforce the importance of health and wellness."



Principal, Patrick Fuller, was cheered on by his two daughters

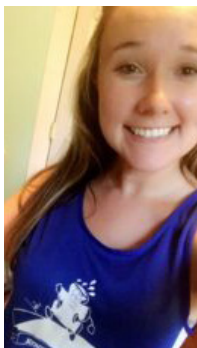
"The crowds are cheering and inspiring us the whole way," said Lindsay Wagner, one of the school's occupational therapists. "You can't help but be emotional as the crowd points to the puzzle piece on my shirt. It's rewarding to raise awareness for autism and our school by running this race."

Calendar of Upcoming Events

2019 "Fore Autism" Golf Classic
Monday, September 30th @ 8:00 AM

5K Walk/Run for Autism
Saturday, April 11th, 2020 @ 9:00 AM

Night of Champions
Thursday, May 14th, 2020 @ 6:00 PM



Madison Waple

Madison Waple, who is a relative of a League School employee, welcomed the opportunity to raise awareness for autism. "Having family members with autism and learning disabilities has given me a new perspective on life and running the Falmouth Road Race to improve the lives of students with autism is an honor," she said.

"I believe every child deserves a unique education," said Chandler Ross, friend of a parent of a League School student. Two of the school's employees point to the school's students as their reason for running. "I appreciated the opportunity to run in support of the students who inspire me every day," said Rachel Finer, one of the school's occupational therapists. "I care deeply about the students and welcomed the opportunity to support the school," said Nancy Murray, an assistant teacher.

The Falmouth Road Race, now in its 47th year, is an iconic seven-mile course that starts in Woods Hole and ends in Falmouth Heights. Passing Nobska Lighthouse, the ocean, and beaches, the views are stunning. Bands and food greet the runners at the end of the race. However, it's not an easy course, and the ending includes a long, steep hill right before the finish line. The enthusiastic crowds encourage the runners and help propel them over the finish line. "The crowd brings a nice energy," said Tim McCabe, the School's Director of Development, who ran the race on behalf of the school for the fourth consecutive year. Tim's nephew, Cash Cantrell, age 13, was the team's youngest participant.

League School of Greater Boston

300 Boston Providence Highway
Walpole, MA, 02032
T: 508-850-3900
www.leagueschool.org

Executive Director - Dr. Frank Gagliardi
Chief Operating Officer - Lawrence E. Sauer
Principal - Patrick Fuller

Thank you to all of the runners who supported the school! In addition to Patrick, Lindsay, Madison, Chandler, Rachel, Nancy, Tim, and Cash, other supporters included Kate O'Halloran, Mike Vazquez, Patrick and Jenna Powers, Erin Maguire, Meghan Ryan, Thomas (TJ) Hughes, and Alison Smart.

