



League School of Greater Boston Names Tim McCabe Its New Head of Development

Dr. Frank Gagliardi, Executive Director of League School of Greater Boston, is pleased to announce the appointment of Walpole resident, Tim McCabe, as its new Head of Development.

Dr. Gagliardi was effusive in his praise for the latest addition to the League School staff. “After an exhaustive search, we were quite fortunate to be able to locate and hire such a capable candidate. Tim brings an excellent track record of success to this position and I believe that the school will benefit greatly from his exceptional applied expertise.”

As Head of Development, Tim will direct and manage all aspects of the school’s fundraising program and will be responsible for meeting its ambitious goals. He will work closely with the Executive Director, members of the Board of Directors and volunteers to develop a strategy to raise the much-needed funds that will ultimately provide the school’s students with the resources needed to succeed.

A graduate of Brown University in Providence, RI, Tim brings more than 10 years of non-profit experience to The League School. Most recently as Director of Annual Giving at The New England Center for Children, Tim was responsible for all aspects of the Annual Giving program including grant writing, individual solicitations and fundraising events. His experience also includes a role as an Individual Giving Officer at Curry College in Milton, MA. While at Curry he cultivated a portfolio of over 150 parents and alumni while overseeing Curry’s alumni volunteer groups dedicated to the role of growing the College’s alumni support. With additional experience at Rhode Island College (RIC) and Boston College (BC), Tim brings substantial insight into the workings of a wide range of giving programs.

Tim is also a graduate of the Isenberg School of Management at the University of Massachusetts where he received his Masters degree in Sports Management and a member of the Association for Fundraising Professionals. He lives in Walpole, MA with his wife Meredith, his two children Patrick (4) Alex (2) and their dog, Higgins.

Tim is looking forward to excelling at his new position – “I’m excited at the prospect of being able to continue to help children and families with autism. The health crisis that is autism receives neither the funding nor the attention it deserves. So as important as raising funds will be to enable our students to reach their potential, so, too, will be raising awareness for the critical work being done by the dedicated teachers and staff at League School.”

Save the Date - League School of Greater Boston Will Be Holding a Ribbon-Cutting Ceremony to Celebrate the Grand Opening of Its New Addition to the School on Sunday, October 4th From 1-4 in the Afternoon - Hope You Can Join Us for This Very Special Event.

In This Issue

- League School Names New Head of Development.....1*
- SAVE THE DATE.....1*
- League School Staff Members Take a Field Trip to Gateway Arts.....2*
- League School Employees of the Month.....3*
- A Special Reflection From a Teacher.....3*
- League School Holds Program With Lesley University.....4*
- League Schools Hosts Networking Event with NVCC.....4*
- Special Event Being Held to Benefit League School.....4*



League School Staff Members Take a Field Trip to Gateway Arts in Brookline

Earlier this year, four members of the League School staff - Judy Smith, Lubna Tirmizey, Paul Larter, and Maureen Pratt - visited Gateway Arts in Brookline. This is an arts-based vocational program operating under the auspices of the non-profit human service provider Vinfen Corporation. It was established in the 1970's by two "hippies." The original goal of the program was to create opportunities for deinstitutionalized adults. Today, the program serves a diversified population including those with cognitive and psychiatric challenges, cerebral palsy, spinal cord injuries, visual impairments, head injuries, hearing impairments, Williams Syndrome, and autism.



Participants in the program can express themselves through an array of mediums including painting on canvas and fabric, weaving, and making pottery or jewelry. All instructors are certified art teachers. While participating in the program, each person is assisted in the development of a personal portfolio. The artwork is sold in the Gateway Craft Store, the Gateway Gallery, online, and at offsite venues. Participants are paid on a commission basis, receiving 50% of the selling price of their creations.

The program has a broad funding base (Department of Education, the Massachusetts Department of Developmental Services, Massachusetts Commission for the Blind, the Statewide Head Injury Program, and MRC). However, some individuals pay privately or are sponsored by patrons.

In addition to working with adults, Gateway Arts offers school-to-work transition services to talented students. While generally a full time program, the schedule can be modified to meet the needs of the student.



Gateway Arts is the only program of its kind on the east coast. Our staff was very impressed by the program's art gallery where the participants' work is displayed in a very professional manner. The state of the art studios, with the latest in tools and materials, are equally impressive. The supportive Gateway staff both encourages and expects its participants to be independent. Each artist is offered the opportunity to receive instruction in all mediums. To help maximize their potential, the artists are offered a myriad of services including professional development instruction, access to visiting artists, focused field trips, academic support, exercise programs, case coordination, mentorships, and the opportunity to participate in a drama club.



Students' creations, including paintings, woven pieces and pottery are on display at the Gateway Arts Showroom.



Mike Slavinsky

Meet Our League School Employees of the Month: For May - Mike Slavinsky

Mike is the assistant teacher in the Transition program classroom 153. He is always the first one to help when he sees someone needs support. He goes above and beyond to help not only the students/staff in his own classroom, but also the students /staff throughout the school. He comes to work every day with a positive attitude and a smile on his face. He helps create a positive and happy environment for students and his colleagues. He is enthusiastic and committed to meeting the needs of all students. Mike is a valuable asset to the Transition team and to League School. Congratulations Mike!



Ross Tweedy

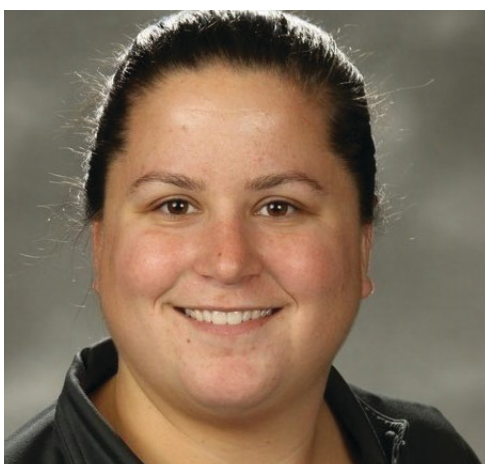
For June/July - Ross Tweedy

Ross is the assistant teacher in the Transition program classroom 145. All agree that Ross is a team player who is patient, kind and really goes the extra mile for students to be successful. He has a remarkable connection with all students. His colleagues rave about his gentle, quiet and respectful demeanour. His students respond positively to Ross' quiet ways, respect and support for them. According to one Transition student, he deserves recognition as employee of the month because "he is funny, has a great last name and riveting blonde hair!"

Great job and congratulations Ross!

What Teaching at League School Means to Me

Here is the next in a series of articles in which a League School staff member shares with us some reflections on what it means to teach at League School of Greater Boston. As we have stated before, our goal is simple - to enable our readers to better understand the special opportunities that both students and teachers alike enjoy by being a part of the League School family. Here is one such reflection from Behavior Specialist, Sarah Knox:



Sarah Knox

This is my seventh year at League School of Greater Boston. Every year brings new learning experiences and new accomplishments. My coworkers here are some of the most supportive and caring people I know. The rapport they build with the students is amazing. Building a good rapport with the students is a very important aspect of education because it helps build trust and understanding. This fosters a comfortable learning environment for our students. The staff here really relies on each other and the team approach to provide the best services and education for all of our students. We have a fantastic amount of training opportunities to further our knowledge in the field and share experiences and training with each other. It would be difficult to imagine having such a successful environment without the amount of training opportunities we are allowed and the added support of the team approach. Having specialists available throughout the day to each team creates an environment that has allowed me to learn about different disciplines and excel in my own discipline.

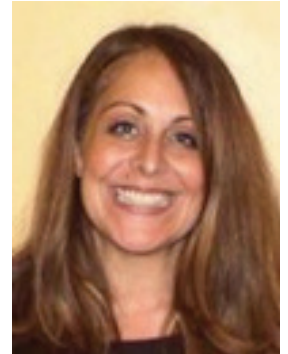
The students here are equally inspiring and I have learned so much from them. Every year I learn a little more to think outside the box, my patience grows, and I grow as a professional. Using SCERTS allows us to collaborate in an organized manner on individual treatment programs for students. It allows us to all use the same language and use our disciplines to put together the best possible programming for our students that encompasses communication, emotional regulation, therapeutic and behavioral supports. SCERTS also fosters an open line of communication with families requesting input on their child's programming as well. It is important to have this open communication to ensure consistency across settings whenever possible. It has been an amazing experience working here these past seven years and I look forward to more years to come!



League School Hosts a Professional Development Program in Conjunction With Lesley University

Last month, League School of Greater Boston hosted a special professional development opportunity for special education personnel at the school.

That afternoon, Elizabeth Stringer Keefe of Lesley University made a presentation entitled "The New Massachusetts Autism Teacher Endorsement: An Overview." Ms. Keefe explained the origin of the new Massachusetts Autism Teacher Endorsement, the background, requirements, and what this state credential can do to bring autism knowledge to schools.



Elizabeth Stringer Keefe is on the faculty in Lesley's Graduate School of Education. Her work focuses on the preparation and education of teachers who work with students with autism. She was involved in the advocacy to bring the autism teacher endorsement to Massachusetts and has worked on its implementation.

A question and answer period followed the talk. Special Education Directors were encouraged to bring their special education teachers and other interested parties as attendees received 2 PDPs (Professional Development Points) for participating.

This was the first in what we hope will be a series of informative presentations as League School of Greater Boston is partnering with Lesley University to bring Lesley's 15-credit Graduate Autism Intervention Specialization to our Walpole location as an off-campus satellite program, beginning this summer.

League School Hosts The Neponset Valley Chamber of Commerce June Networking Event

On Thursday night, June 18th, League School of Greater Boston hosted the Neponset Valley Chamber of Commerce's monthly networking event. About 40 local businessmen and women met at the school for an evening of fine food and lively conversation. It was an engaging event that provided a number of executives with a closer look at the school's new facilities.

The school's Executive Director, Dr. Frank Gagliardi, provided tours of the new building to a number of attendees. Roger Lockwood, President of the school's Board of Directors, also made a brief presentation to those gathered, discussing the school's mission and our hopes for the future, focusing on how the enhanced facilities will offer students on the autism spectrum opportunities to learn and advance that simply are not available elsewhere.

League School to Be One of the Beneficiaries of a Special Family Day of Fun

In late September, there will be a special "Family Fun Day" held in Norwood - and League School, along with Autism Speaks, will be the beneficiaries of monies raised at the event. The hours will be 10am till 4pm. There will be fire trucks new and old-fashioned police cars, ambulances, big rigs, monster truck, Possibly a SWAT truck, and my favorite, an army tanker. We also will have face painting, dig for treasure, ring toss, bounce house, surprise gift bags, and of course raffles for adults and kids. The exact date and location have yet to be finalized, but we will provide an update in our next newsletter. We hope you can join us for what we think will be a very special day.



Neponset Valley Chamber of Commerce's President, Tom O'Rourke, gets ready to introduce Roger Lockwood to the crowd.